



2017 Rolex Big Boat Series

September 13-17, 2017

SAILING INSTRUCTIONS

Includes Amendment 1

Organizing Authority: St. Francis Yacht Club

The notation [DP] in a rule in the SI means that the penalty for a breach of that rule may, at the discretion of the protest committee, be less than disqualification.

The notation [NP] in a rule in the SI means it shall not be grounds for protest by a boat. This changes RRS 60.1(a).

1. RULES

- 1.1. The regatta will be governed by:
 - a. the rules as defined in The Racing Rules of Sailing, including Appendixes T and V;
 - b. J/120 Fleet 5 rules, J/105 Fleet 1 rules;
 - c. The Deeds of Gift for the following trophies: St. Francis Perpetual, the City of San Francisco Perpetual, the Atlantic Perpetual, the Keefe-Kilborn Perpetual, the Richard Rheem Perpetual, and the Commodore's Perpetual.
- 1.2. [NP] All competitors shall wear a PFD at all times while on the water, other than brief periods while adding or removing clothing, or below deck. The 'Y' flag will not be flown. This changes RRS 40 and the preamble to Part 4.
- 1.3. RRS 48.2 is deleted.
- 1.4. US Sailing Prescriptions to RRS 63.2 and 63.4 are deleted.
- 1.5. When there is conflict between the rules in the notice of race, the sailing instructions, or any of the other documents that govern this event, the sailing instructions shall prevail. This changes RRS 63.7.

2. NOTICES TO COMPETITORS

Notices to competitors will be posted on the official regatta notice board located in the hallway adjacent to the side (Regatta) entrance of StFYC.

3. CHANGES TO SAILING INSTRUCTIONS

Any change to the sailing instructions (SI) will be posted by 0930 on the day it will take effect, except any change to the schedule of races will be posted by 1900 on the day before it will take effect.

4. SIGNALS MADE ASHORE

- 4.1. Signals made ashore will be displayed from the flagpole located on the StFYC Race Deck.
- 4.2. When flag AP is displayed ashore, '1 minute' is replaced with 'not less than (60) sixty minutes'. This changes rule Race Signal AP.

5. NUMBER AND SCHEDULE OF RACES

- 5.1. The first warning is scheduled for 1100, daily. Subsequent warnings will be made as soon as practical after the start of the preceding class/division.
- 5.2. See Attachment A, Race Schedule & Course Area Assignments
- 5.3. Races that are not sailed on their scheduled day will be sailed on a later day.

6. RACE AREAS

- 6.1. Class starting locations: See Attachment A, Race Schedule & Course Area Assignments.
- 6.2. Starting areas:
 - a. TI: Treasure Island Starting Area will be approximately 0.5nm west of Treasure Island.
 - b. ALZ: Alcatraz Starting Area will be off the western face of Alcatraz Island.
- 6.3. The race committee reserves the right to relocate any starting area for any reason. If a starting area is relocated, flag L will be displayed on the respective race area's signal boat with one (1) sound.

7. CLASS FLAGS

Class/Division	Flag Description
One Design Classes	Black class insignia on a white field
ORR A	Black letter A on a white field
ORR B	Black letter B on a white field
ORR C	Black letter C on a white field
PHRF Sportboat	Black letter D on a white field
Multihull	Black letter E on a white field

8. COURSES

- 8.1. The courses are described on Attachment C – Course Descriptions.
- 8.2. The starting areas listed in Attachment C are intended locations only. The race committee may originate any course from any area. Course distances are for reference only; they are approximate and may differ depending on the actual starting location used.
- 8.3. No later than the warning signal, the race committee signal boat will display:
 - a placard designating the course;
 - a placard the with the distance and bearing to mark W, if used.

9. MARKS

- 9.1. The marks are described on Attachment D – Description of Marks.
- 9.2. Marks “G”, “2gate” and “18gate” will be a gate. In the event that one of the gate marks is not in place, the remaining mark shall be rounded to port.

10. AREAS THAT ARE OBSTRUCTIONS

- 10.1. Each line bound by the following two points is designated as an obstruction. Boats are prohibited from crossing any of these lines while racing.
 - a. The southern end of the SF Marina entrance Wave Attenuator and the closest point ashore.
 - b. The northern end of the SF Marina entrance Wave Attenuator and the closest point ashore.
 - c. The “H” Beam piling (located approximately 200 yards west of the St. Francis YC) and the closest point ashore.
 - d. Anita Rock Light located approximately 0.30nm West of StFYC (“Anita Rock” Q 20ft 5M), and the closest point ashore.
 - e. Anita Rock Light located approximately 0.30nm West of StFYC (“Anita Rock” Q 20ft 5M), and a yellow buoy “AR”, or a temporary white ball in its place, (located approximately 100 yards northwest of the Anita Rock Light).
 - f. Yellow buoy “AR”, or a temporary white ball in its place, (located approximately 100 yards northwest of Anita Rock Light) and the closest point ashore.
 - g. The South Tower of the Golden Gate Bridge and the closest point ashore.
 - h. The Green/Red Bell Buoy off the West end of Alcatraz Island and Alcatraz Island.
 - i. The Green Buoy (G“3”) South of Point Blunt-Angel Island and the closest point ashore.
 - j. The northeastern most corner of Pier 45 and Fl R 2.5s “2” on the easternmost end of the Aquatic Park breakwater.
 - k. A white buoy off of Pier 39 and the end of Pier 39.
 - l. A white buoy off of Pier 43-1/2 and the end of Pier 43-1/2.

11. THE START

- 11.1. For the first race each day, the starting order will be the order stated in Attachment A, Race Schedule & Course Area Assignments. For all following races each day, the starting order will be determined by the race committee.
- 11.2. The starting line will be between a staff displaying an orange and yellow striped flag on the starting line signal boat, and a staff displaying an orange and yellow striped flag on the pin boat or an inflatable red cone set to port, while facing upwind.
- 11.3. A boat that does not start within four (4) minutes of her starting signal shall be scored Did Not Start (DNS). This changes RRS 63.1 and A5.

12. RECALLS

As a courtesy, the race committee will attempt to hail On Course Side (OCS) boats by VHF (see SI 19). Failure to execute this hail or failure to receive it shall not relieve a boat of her sole obligation to start properly, nor shall it constitute an improper action or omission of the race committee under RRS 62.1(a).

13. CHANGE OF THE NEXT LEG OF THE COURSE

- 13.1. To change the next leg of the course, the race committee will move the original mark (or the finishing line) to a new position.
- 13.2. The race committee may change a leg of the course by up to five (5) degrees in bearing and/or 0.2nm in length without a signal. This changes RRS 33.

14. THE FINISH

- 14.1. Finish areas: See Attachment C – Course Descriptions.
- 14.2. The finish lines will be between:
- 14.3. For downwind finishes “DW”, the finishing line will be between a staff displaying an orange and yellow striped flag on the signal boat and an orange inflatable ball, opposite the starting line.
- 14.4. For upwind finishes “UW”, the finishing line will be between a staff displaying an orange and yellow striped flag on a race committee boat and a port-end orange inflatable ball, set approximately 200 yards upwind of mark W.
- 14.5. For race deck “RD” finishes, the finishing line shall be between StFYC outer mark A and a yellow placard on the StFYC Race Deck. Boats shall keep StFYC inner mark “B” to the South while finishing.

15. PENALTY SYSTEM

RRS Appendix V – Alternative Penalties will apply.

16. TIME LIMITS

- 16.1. The time limit for each race will be 4.5 hours.
- 16.2. For One Design classes, a boat failing to finish within forty-five (45) minutes after the first boat in her class sails the course and finishes, will be scored Did Not Finish (DNF). This changes RRS 35 and A5.
- 16.3. For Handicap divisions, a boat failing to finish within ninety (90) minutes after the first boat in her division sails the course and finishes, will be scored Did Not Finish (DNF). This changes RRS 35 and A5.
- 16.4. On the last day of the racing, the warning signal for the first class in a particular starting area shall not be made after 1430. Subsequent class warning signals or warning signals for re-started classes may be made after this time.

17. PROTESTS AND REQUESTS FOR REDRESS

- 17.1. The organizing authority has appointed an international jury in accordance with RRS Appendix N1.
- 17.2. RRS Appendix T - Arbitration will apply.
- 17.3. Protest forms are available at the jury desk located in the hallway adjacent to the side (Regatta) entrance of StFYC. Protest and requests for redress or reopening shall be delivered there within the appropriate time limit.
- 17.4. For each class, the protest time limit is sixty (60) minutes after the race committee signal boat docks; except in the case of a complaint by Vessel Traffic or the USCG. This time will be posted. This constitutes the time limit mentioned in the first sentence of RRS 61.3.
- 17.5. In the event of a complaint by Vessel Traffic or the USCG, the protest time limit will be extended up to two (2) days after the conclusion of the regatta. This changes RRS 60.2(a) and RRS 61.3.

- 17.6. The international jury will hear protests and requests for redress as soon as possible and in the order it determines. The hearing schedule will be posted no later than thirty (30) minutes after the close of protest time. This constitutes the notification required by RRS 63.2.
- 17.7. Notices of any other protests by the race committee, technical committee or international jury will also be posted. This constitutes the notification required by RRS 61.1(b).
- 17.8. It is the sole responsibility of each boat involved to be ready and have witnesses available when the hearing is called.
- 17.9. If the race committee posts a list of boats scored OCS, ZFP, UFD, or BFD on the official notice boat before the protest time limit, a request for redress based on such a posted score shall be made no later than sixty (60) minutes after the protest time limit. This changes the first sentence of RRS 62.2.
- 17.10. On the last scheduled day of racing, a request for redress on an international jury decision, or a request to reopen a hearing, shall be delivered no later than sixty (60) minutes after the decision was announced, either written or orally. This changes RRS 62.2 and RRS 66.
- 17.11. Decisions of the international jury will be final as provided in RRS 70.5.

18. SCORING

- 18.1. A boat's series score will be the total of her race scores, with no score excluded. This changes RRS A2.
- 18.2. One (1) race must be completed to constitute a series.
- 18.3. An ORR boat's corrected time will be calculated using her San Francisco Bay Time Correction Factor.
- 18.4. A Multihull boat's corrected time will be calculated using her Time-On-Time (TOT) Time Correction Factor.
- 18.5. A PHRF Sportboat's corrected time will be calculated using her NCPHRF Time-On-Distance (TOD) rating.

19. RADIO COMMUNICATION

The race committee may make radio broadcasts using the following VHF channels:

- a. For Starting Area TI - VHF channel 69
- b. For Starting Area ALZ - VHF channel 71

20. [NP] SAFETY REGULATIONS

- 20.1. Before the first warning signal for the first race each day, each boat shall: 1) sail past the race committee signal boat on starboard tack; 2) announce her sail number; and 3) obtain the recognition of her sail number by the race committee.
- 20.2. A boat that retires from a race shall notify the race committee via radio before leaving the course, or, when that is impossible, immediately after arrival ashore.

21. COMMERCIAL TRAFFIC

- 21.1. Racing occurs near active shipping channels. The race committee would like to call special attention to the preamble to RRS Part 2.
- 21.2. A race committee boat may signal a boat that is racing to alter course to avoid impeding the passage of commercial vessels by making a sound signal (horn or whistle) and pointing flag V at the boat. The signaled boat shall promptly comply with the signal unless compliance would create an unsafe condition. If a boat fails to comply with such a signal, the race committee shall protest the boat. In this case the protest committee shall assume that the course alteration would not have created an unsafe condition, and the protested boat shall have the burden of proving otherwise.
- 21.3. If a commercial vessel sounds five blasts at a boat which is racing, and/or the vessel or the USCG is subsequently able to identify the offending boat, the boat may be subject to protest. In the event the race committee files the protest, the protest committee shall assume that the identified boat has impeded passage or violated the U.S. Inland Navigation Rules, and the identified boat shall have the burden of proving otherwise.
- 21.4. A boat may not take a penalty as provided in Appendix V when she may have broken any part of sailing instruction 21. When a protest committee decides that a boat has broken rule 21, herein, the penalty shall be a disqualification that is not excludable.
- 21.5. The StFYC shall cooperate with and provide relevant information to the Coast Guard or other governmental authority regarding investigations of boats impeding ship traffic or violating U.S. Inland Navigation Rules (33 CFR 83).

22. [NP][DP] ADVERTISING

Boats shall display event advertising while racing as supplied by the organizing authority as follows:

- a. Rolex decals - affixed to both sides of the bow;
- b. Rolex flag - flown from the backstay approximately three (3) feet above the deck when possible.

23. [NP][DP] SUPPORT BOATS

- 23.1. Due to limited dock space, support boats will not have access to the StFYC Guest Docks unless assigned dock space by the StFYC Dockmaster.
- 23.2. During racing all support boats must stay clear and outside of race committee boats or boats flying a jury flag or press flag at all rounding marks, start and finish lines except when rendering assistance to a boat in danger either at the boat’s request or at the request of the race committee.

24. [DP] HAUL OUT RESTRICTIONS

No boat shall be hauled out during the regatta except with and according to the terms of prior written permission of the race committee.

25. PRIZES

Prizes will be awarded based on participation and division splits. In addition to take-home prizes, the following perpetual trophies will be awarded: St. Francis Perpetual, City of San Francisco Perpetual, Atlantic Perpetual, Keefe-Kilborn Memorial, Richard Rheem Perpetual and Commodore’s Cup.

26. DISCLAIMER OF LIABILITY

Sailing is an activity that has an inherent risk of damage and injury. Competitors in this race participate entirely at their own risk. See RRS 4, Decision to Race. The race organizers (OA, race committee, PC, host club, sponsors, or any other organization or official) will not be responsible for damage to any boat or other property or the injury to any competitor, including death, sustained as a result of participation in this race. By participating in this regatta, each competitor agrees to release the race organizers from any and all liability associated with such competitor’s participation in this event to the fullest extent permitted by law.

27. [NP] BERTHING AND TRAILER STORAGE

- 27.1. Boats may be moored in the SF Marina from Monday, September 11 through Monday, September 18, 2017. When not racing, practicing or in transit, boats shall remain in their assigned berth in the San Francisco Marina unless granted written permission by the race committee.
- 27.2. Boat trailers shall be stored at the direction of the StFYC Dockmaster or Race Coordinator and registered with a race office representative. Unregistered storage trailers may be ticketed and towed by the City of San Francisco.

28. RIGHTS TO USE NAME AND LIKENESS

By participating in this event, competitors automatically grant to the organizing authority and the event sponsors the right, in perpetuity, to make, use, and show, at their discretion, any photography, audio and video recordings, and other reproductions of them made at the venue or on the water from the time of their arrival at the venue, until their final departure, without compensation.

Attachment A – Race Schedule & Course Area Assignments

Attachment B – Course Area(s) Chartlets

Attachment C – Course Descriptions

Attachment D – Description of Marks

END #



2017 Rolex Big Boat Series

SAILING INSTRUCTIONS

Attachment A Amended – Course Descriptions

Organizing Authority: St. Francis Yacht Club

1200 September 10, 2017

Thursday 9/14		
Race #1		
COURSE AREA	"ALZ" (Alcatraz) VHF 71	"TI" (Treasure Island) VHF 69
Starting Order	PHRF Sportboat	Multi
	ORR C	Pac52
	J/120	ORR A
	Express 37	ORR B
	J/105	Farr 40
		J/70
Race #2		
COURSE AREA	"ALZ" (Alcatraz) VHF 71	"TI" (Treasure Island) VHF 69
Starting Order TBD (per SI 11.1)	Multi	PHRF Sportboat
	Pac52	ORR C
	ORR A	J/120
	ORR B	Express 37
	Farr 40	J/105
	J/70	

Friday 9/15		
Race #3		
COURSE AREA	"ALZ" (Alcatraz) VHF 71	"TI" (Treasure Island) VHF 69
Starting Order	Multi	PHRF Sportboat
	Pac52	ORR C
	ORR A	J/120
	ORR B	Express 37
	Farr 40	J/105
		J/70
Race #4		
COURSE AREA	"ALZ" (Alcatraz) VHF 71	"TI" (Treasure Island) VHF 69
Starting Order	PHRF Sportboat	Multi
	ORR C	Pac52
	J/120	ORR A
	Express 37	ORR B
	J/105	Farr 40
	J/70	

Saturday 9/16		
Race #5		
COURSE AREA	"ALZ" (Alcatraz) VHF 71	"TI" (Treasure Island) VHF 69
Starting Order	PHRF Sportboat	Multi
	ORR C	Pac52
	J/120	ORR A
	Express 37	ORR B
	J/105	Farr 40
		J/70
Race #6		
COURSE AREA	"ALZ" (Alcatraz) VHF 71	"TI" (Treasure Island) VHF 69
Starting Order	Multi	PHRF Sportboat
	Pac52	ORR C
	ORR A	J/120
	ORR B	Express 37
	Farr 40	J/105
	J/70	

Sunday 9/17		
Race #7		
COURSE AREA	"ALZ" (Alcatraz) VHF 71	"TI" (Treasure Island) VHF 69
Starting Order	Multi	PHRF Sportboat
	Pac52	ORR C
	ORR A	J/120
	ORR B	Express 37
	Farr 40	J/105
	J/70	

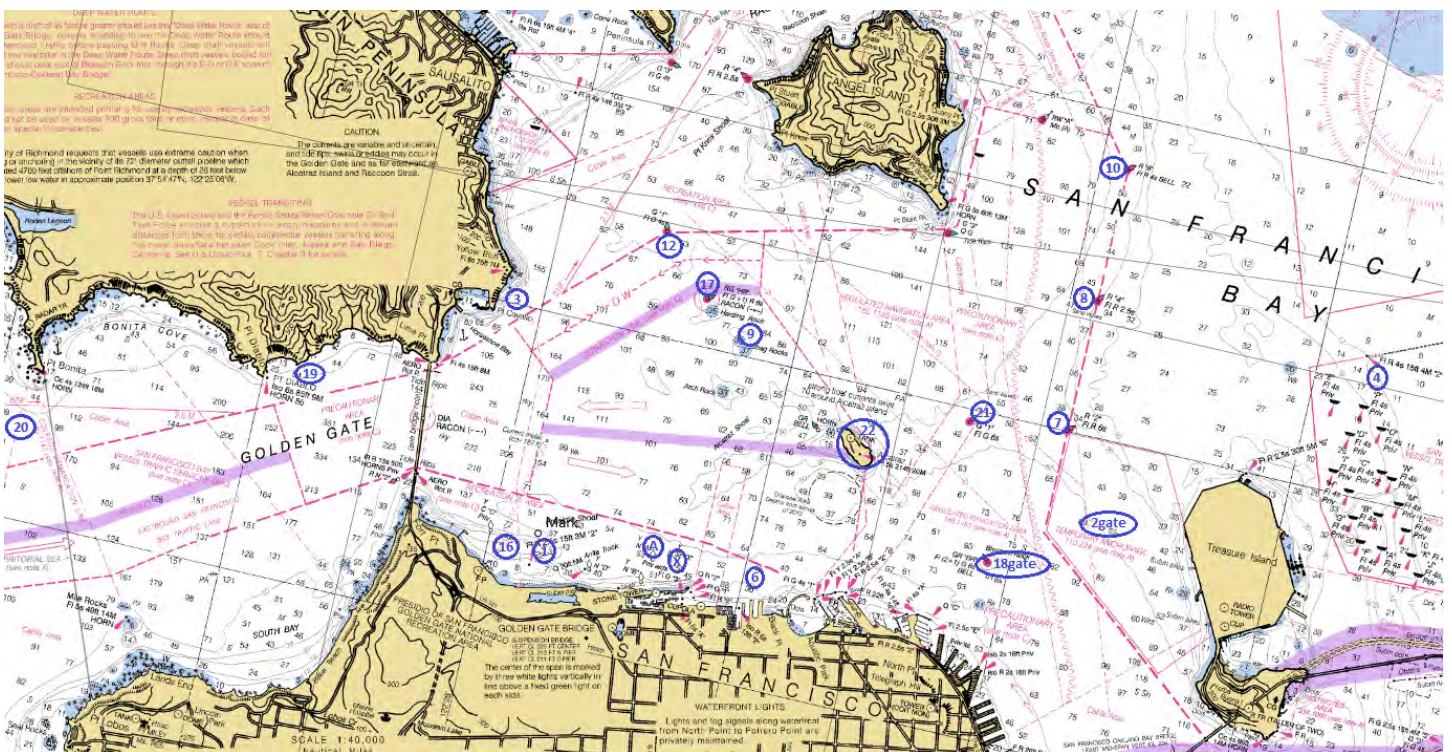
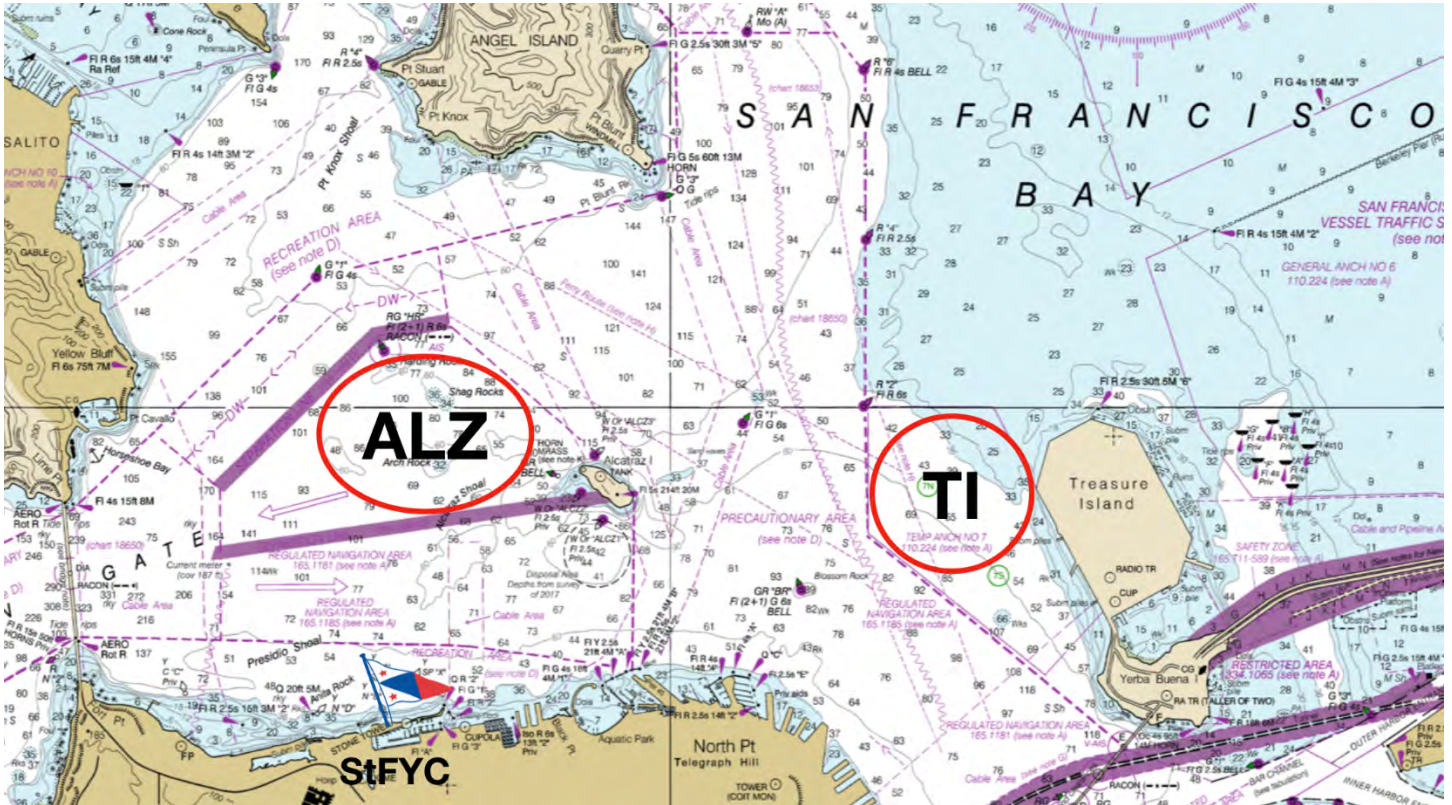


2017 Rolex Big Boat Series

SAILING INSTRUCTIONS

Attachment B – Course Area(s) Chartlets

Organizing Authority: St. Francis Yacht Club





2017 Rolex Big Boat Series

SAILING INSTRUCTIONS

Attachment C – Course Descriptions

Organizing Authority: St. Francis Yacht Club

Rounding marks and the order in which they are to be rounded
 p = round to port s = round to starboard

Approx. Distance NM
(from Start Area)

Course #											Finish Area	Treasure Island	Alcatraz	
W-L COURSES WITH PORT ROUNDINGS and DROP MARKS														
1	Start	Wp	Op	G							UW	Distance TBD		
2	Start	Wp	Op	G	Wp	Op					DW			
3	Start	Wp	Op	G	Wp	Op	G				UW			
4	Start	Wp	Op	G	Wp	Op	G	Wp	Op		DW			
W-L COURSES WITH STARBOARD ROUNDINGS and DROP MARKS														
5	Start	Ws	Os	G							UW	Distance TBD		
6	Start	Ws	Os	G	Ws	Os					DW			
7	Start	Ws	Os	G	Ws	Os	G				UW			
8	Start	Ws	Os	G	Ws	Os	G	Ws	Os		DW			
ALCATRAZ: W-L COURSES USING BOTH DROP MARKS AND FIXED MARKS														
9	Start	Wp	21p	Wp							DW		≈6.5	
10	Start	Wp	21p	3p							DW		≈8.2	
11	Start	Wp	21p	Wp	21p	Wp					DW		≈10.8	
12	Start	Wp	21p	3p	G	Wp					DW		≈10.3	
13	Start	Wp	8p	3p							DW		≈9.5	
14	Start	Wp	10s	3p							DW		≈10.5	
15	Start	3p	21p	3p							DW		≈9.9	
16	Start	3p	21p	3p	G	Wp					DW		≈12.0	
17	Start	19p	9p	19p							DW		11.6	
18	Start	19p	21p	3p							DW		12.1	
19	Start	19p	8p	3p							DW		13.7	
20	Start	19p	10s	3p							DW		14.3	
21	Start	19p	10s	19p							DW		16.6	
22	Start	20p	8p	19p							DW		20.4	
23	Start	19p	10s	3p	10s	3p					DW		22.4	
TREASURE ISLAND: W-L COURSES USING both DROP MARKS AND FIXED MARKS														
24	Start	1p									DW	7.5		
25	Start	16s									DW	8.1		
26	Start	1p	18gate	6p							DW	10.3		
27	Start	16s	18gate	6s							DW	10.9		
28	Start	1p	2gate	6p							DW	11.9		
29	Start	16s	2gate	6s							DW	12.5		
30	Start	16s	18gate	16s							DW	14.2		
31	Start	1p	2gate	1p							DW	14.5		
32	Start	16s	2gate	16s							DW	15.7		
33	Start	16s	4s	16s							DW	18.2		
34	Start	1p	2gate	1p	2gate	6p					DW	18.9		
35	Start	16s	2gate	16s	2gate	6s					DW	20.1		
36	Start	16s	2gate	16s	2gate	16s					DW	23.3		

Rounding marks and the order in which they are to be rounded

p = round to port s = round to starboard

Approx. Distance NM
(from Start Area)

Course #															Finish Area	Treasure Island	Alcatraz
ALCATRAZ - TREASURE ISLAND: BAY TOUR COURSES WITH RACE DECK FINISH																	
37	Start	1p	1o												RD		
38	Start	16s	21p	1p	1o										RD	10.5	8.5
39	Start	16s	21p	19p											RD	13.7	11.7
40	Start	16s	8p	19p											RD	15.5	13.5
41	Start	16s	17s	18gate	1p	1o									RD	11.8	9.8
42	Start	16s	17s	2gate	1p	1o									RD	13.1	11.1
43	Start	16s	17s	2gate	6p	18gate	1p	1o							RD	15.9	13.9
44	Start	16s	17s	2gate	8p	1p	1o								RD	14.8	12.8
45	Start	16s	17s	2gate	10s	4s	1p	1o							RD	18.6	16.6
46	Start	16s	17s	2gate	10s	4s	6p	18gate	1p	1o					RD	21.4	19.4
47	Start	16s	17s	2gate	10s	4s	19p	6p	1p	1o					RD	24.5	22.5
48	Start	16s	17s	2gate	8p	3p	Xp	7s	4s	1p	1o				RD	25.4	23.4
49	Start	16s	17s	2gate	10s	4s	3p	Xp	8p	1p	1o				RD	27.6	25.6
50	Start	16s	17s	2gate	10s	4s	3p	Xp	21p	19p					RD	28.8	26.7
51	Start	16s	17s	22p	10s	4s	16s	9p	3p	Xp	21p	1p	1o		RD	27.5	25.5
52	Start	16s	9p	19p											RD	11.8	9.1
53	Start	16s	9p	3p	Xp	8p	1p	1o							RD	16.9	14.9
54	Start	16s	9p	3p	Xp	8p	19p								RD	19.9	17.9
55	Start	16s	9p	3p	18gate	8p	1p	1o							RD	17.1	15
56	Start	16s	9p	3p	18gate	8p	19p								RD	20	18
57	Start	16s	9p	3p	18gate	21p	20p								RD	22.5	20.5
58	Start	16s	9p	19p	21p	1p	1o								RD	16.8	14.3
59	Start	1p	1o	21p	1p	1o									RD	9.9	8
60	Start	1p	1o	2gate	1p	18gate	1p	1o							RD	17	15
61	Start	19p													RD	7.8	5.5
62	Start	19p	7s	1p	1o										RD	14.1	11.8
63	Start	19p	17s	22p	21p	19p									RD	16.5	14.2
64	Start	19p	21p	19p											RD	16.1	13.8
65	Start	19p	8p	9p	8p	1p	1o								RD	22.2	18
66	Start	19p	22p	21p	16s	8p	1p	1o							RD	20.9	18.7
67	Start	19p	8p	3p	Xp	8p	9p	2gate	1p	1o					RD	28	25.7
68	Start	20p	7s	3p	Xp	10s	4s	1p	1o						RD	31.1	28.8
69	Start	20p	18gate	21p	3p	Xp	8p	9p	2gate	1p	1o				RD	31.8	29.6
ALCATRAZ: BAY TOUR COURSES WITH RACE DECK FINISH																	
70	Start	Wp	18gate	1p	1o										RD		≈6.8
71	Start	Wp	6p	18gate	1p	1o									RD		≈7.3
72	Start	Ws	9p	3p	Xp	6p	1p	1o							RD		≈8
73	Start	Ws	9p	3p	Xp	18gate	1p	1o							RD		≈10.6
74	Start	Ws	9p	3p	Xp	6p	16s	17s	18gate	1p	1o				RD		≈15.1
75	Start	Ws	17s	22p	8p	3p	2gate	1p	1o						RD		≈16.7
76	Start	Wp	7s	3p	6p	21p	1p	1o							RD		≈14.6
77	Start	Wp	22p	8p	3p	21p	4s	1p	1o						RD		≈19.6
78	Start	Wp	21p	3p	Xp	8p	9p	2gate	1p	1o					RD		≈20.1



2017 Rolex Big Boat Series
SAILING INSTRUCTIONS
Attachment D – Description of Marks

Organizing Authority: St. Francis Yacht Club

Mark	Description
A	Outer Yellow sphere "A" approx. 400 yards north of StFYC Race Deck
B	Inner Yellow Sphere "B" (Billingham) approx. 50 yards north of StFYC Race Deck
W	Yellow inflatable tetrahedron set as a windward mark
O	Orange inflatable ball set as a windward offset mark to Mark W
G	Yellow inflatable tetrahedrons set as a leeward gate (initially set approx. 300 yards to windward of the signal boat)
X	Yellow/Blue sphere "X" approx. 400 yards north of Golden Gate YC
1	Yellow inflatable tetrahedron set 0.20nm at 350°M from Fl R 2.5s "2" at Presidio Shoal
1o	Orange inflatable ball set as a windward offset mark to be rounded in the same direction as Mark 1
2gate	Yellow inflatable cone set as a leeward gate set 0.80nm at 050°M from Green/Red "BR" Fl Bell at Blossom Rock
3	Yellow inflatable tetrahedron set approx. 300 yards south of Point Cavallo
4	Yellow inflatable cone set 0.40nm at 040°M from Treasure Island North Light Fl R 2.5s "6"
6	Yellow Can or Yellow inflatable cone set 0.20nm north of Fort Mason piers
7	Red "2" Fl R 6s, 1.05nm west of the northern end of Treasure Island
8	Red "4" Fl R 4s Horn, 1.0nm east of Point Blunt
9	Yellow inflatable cone set 0.33nm at 115°M from Green/Red "HR" 1 Qk Fl R at Harding Rock
10	Red "6" Fl R 4s, 1.10nm northeast of Point Blunt
16	Yellow Can "TB" (Tom Blackaller) 0.45nm east of Fort Point
17	Red/Green "HR" 1 Qk Fl R at Harding Rock (1.12nm at 286° from the northern most point on Alcatraz Island)
18gate	Leeward gate between Green/Red "BR" Fl Bell at Blossom Rock, and a yellow inflatable cone set to the north
19	Yellow Inflatable tetrahedron 0.18nm @ 065° M from Pt. Diablo Light
20	Red/Green Fl(2+1) R6s Bell (ocn) 0.60nm southwest of Point Bonita
21	Green "1" Fl G 6s East of Alcatraz Island (0.70nm @ 047°M from Alcatraz Light Fl 5s 214ft 20M)
22	Alcatraz Island